

REX



ELETTROPOMPE SOMMERSIBILI MONOBLOCCO MULTISTADIO VERTICALI, PER POZZI DA 6'' **VERTICAL SUBMERSIBLE SINGLE BLOCK MULTI STAGE ELECTRIC PUMPS, FOR 6 INCH WELLS**

PREVALENZA : 44 mt. ÷ 76,5 mt.
PORTATA : 4,5 m³/h ÷ 9,6 m³/h
POTENZA NOMINALE : 0,55 kW (0,75HP) ÷ 1,1 kW (1,5HP)

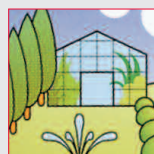
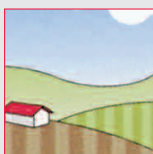
PUMP HEAD : 44 m to 76.5 m
DELIVERY : 4.5 m³/h to 9.6 m³/h
RATED HORSEPOWER : 0.55 kW (0.75HP) to 1.1 kW (1.5HP)

APPLICAZIONI

- IMPIANTI PER LA MOVIMENTAZIONE DI ACQUE NEI SETTORI CIVILE ED INDUSTRIALE
- IMPIANTI DI PRESURIZZAZIONE.
- IMPIANTI DI APPROVIGIONAMENTO IDRICO DA VASCHE DI PRIMA RACCOLTA, POZZI DA 6'', POZZI ROMANI, BACINI E CORSI D'ACQUA.
- IRRIGAZIONE A PIOGGIA.

APPLICATIONS

- CIVIL AND INDUSTRIAL WATERS HANDLING PLANTS
- PRESSURISATION PLANTS.
- WATER SUPPLY FROM RAIN WATER TANKS OR RESERVOIRS, 6'' WELLS, ROMAN WELLS, BASINS AND WATERCOURSES.
- SPRINKLER SYSTEMS.



AVARVEN®

CARATTERISTICHE DI COSTRUZIONE

- MOTORE A BAGNO D'OLIO (BIODEGRADABILE E DIELETTRICO) PER RAFFREDDAMENTO E LUBRIFICAZIONE CUSCINETTI.
- DOPPIA TENUTA MECCANICA: LATO MOTORE A BAGNO D'OLIO. LATO POMPA A BAGNO D'ACQUA.
- IMMERSIONE MASSIMA: mt. 20.
- GRADO DI PROTEZIONE IP 68.
- CLASSE DI ISOLAMENTO: F.
- TEMPERATURA MAX. LIQUIDO POMPATO: 35°C.
- VERSIONI REX: Monofase: 220-277V/50Hz o 220-277V/60Hz con protettore termico incorporato e condensatore permanentemente inserito. Trifase: 220-277V/50Hz o 380-480V/50Hz e 220-277V/60Hz o 380-480V/60Hz con protezione da sovraccarico a cura dell'utente.
- VERSIONI GPV.RX: Monofase: 220-230V/50Hz con protettore termico incorporato e condensatore permanentemente inserito.
- CAVO STANDARD:
 Monofase: 20 metri H07RN-F per versione normale (aut.-man).
 Trifase: 20 metri H07RN-F

SPECIALI VOLTAGGI E FREQUENZE A RICHIESTA.

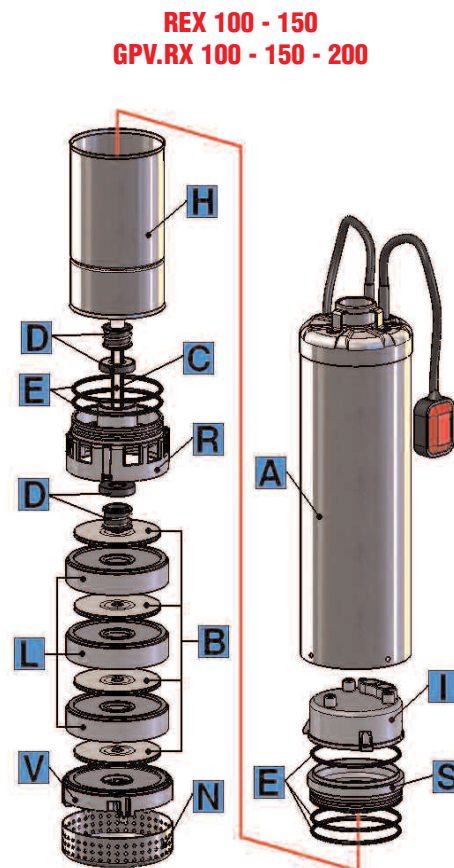
DESIGN ENGINEERING

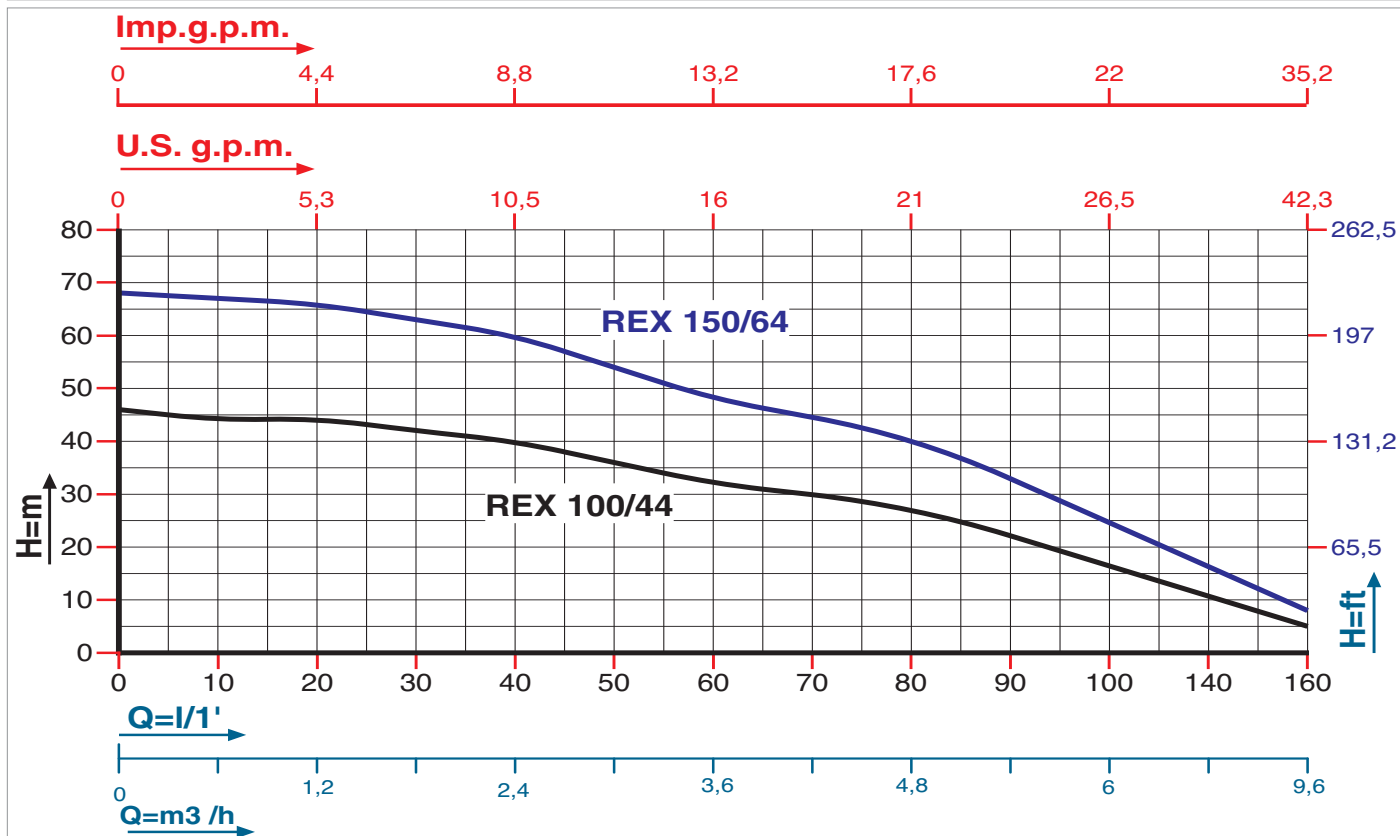
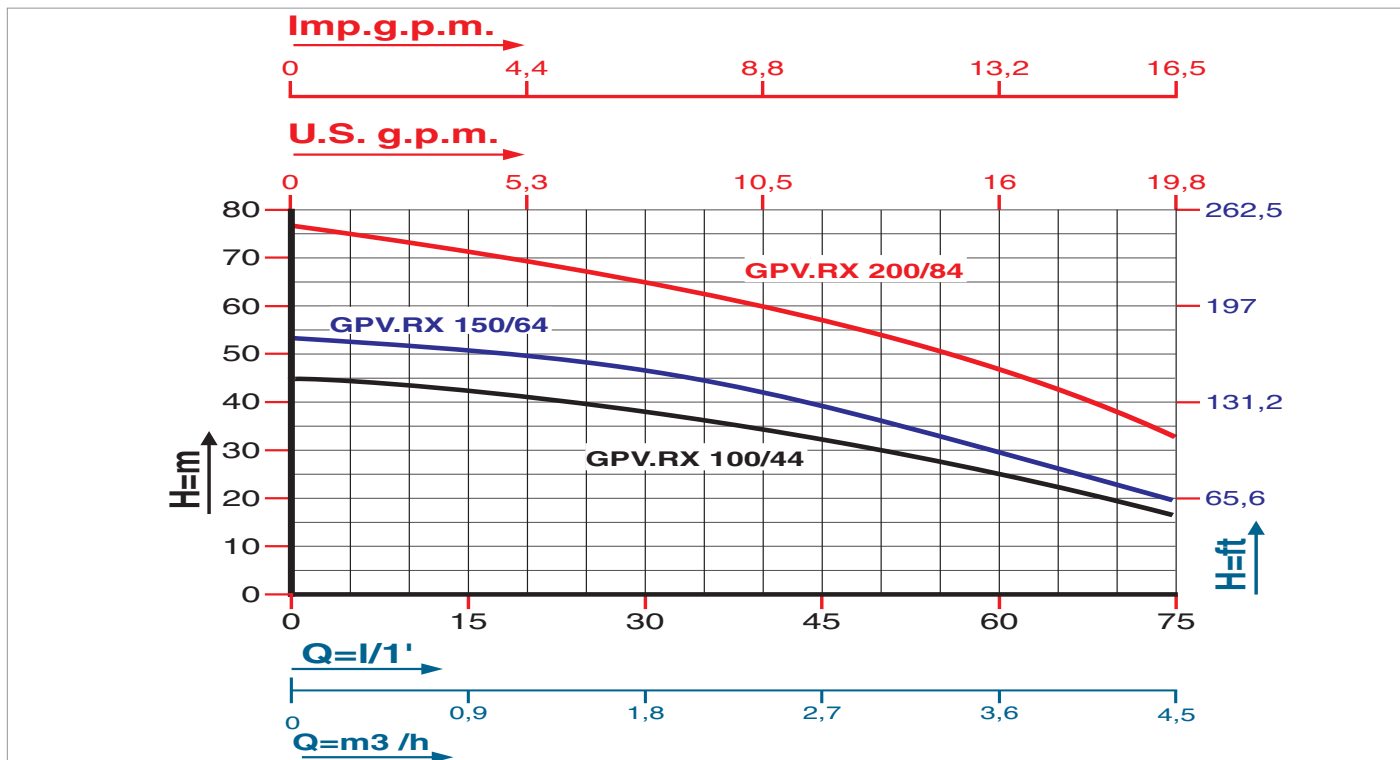
- OIL BATH MOTOR (BIODEGRADABLE AND DIELECTRIC) FOR COOLING AND BEARING LUBRICATION.
- DOUBLE MECHANICAL SEALS: ENGINE FACE: OIL BATH. PUMP FACE: WATER BATH.
- PERMISSIBLE DRAUGHT OF WATER: 20 m
- IP 68 PROTECTION CLASS.
- CLASS "F" INSULATION.
- MAX. PUMPED LIQUID TEMPERATURE: 35°C
- REX VERSIONS: Single Phase: 220-277V/50Hz or 220-277V/60Hz with built in thermal protection and permanent capacitor. Three Phase : 220-277V/50Hz or 380-480V/50Hz and 220-277V/60Hz or 380 - 480V / 60Hz with overload protection care of the User.
- GPV.RX VERSIONS: Single Phase: 220-230V/50Hz with built in thermal protection and permanent capacitor.
- STANDARD CABLE FEATURES:
 Single Phase: 20 metres H07RN-F for the standard version (automatic-manual).
 Three Phase: 20 metres H07RN-F

CUSTOMISED VOLTAGE AND FREQUENCY RATING AVAILABLE ON DEMAND.

TABELLA MATERIALI / MATERIALS TABLE:

Pos.	Componente - Component	Materiale - Materials	
A	Carcassa esterna / External motor housing	ACCIAIO INOX AISI 304 - DIN 1.4301 / STAINLESS STEEL	
B	Giranti / Impellers		
C	Albero (lato pompa) / Shaft (pump side)	ACCIAIO INOX AISI 303 - DIN 1.4005 / STAINLESS STEEL	
D	Tenuta meccanica REX REX Mechanical seal	Lato motore / Motor face Lato pompa / Pump face	
	Tenuta meccanica GPV.RX GPV.RX Mechanical seal	Lato motore / Motor face Lato pompa / Pump face	
E	O-ring	NBR	
H	Carcassa motore / Motor housing	ACCIAIO INOX AISI 304 - DIN 1.4301 / STAINLESS STEEL	
I	Coperchio / Cover	REX	IXEF
		GPV.RX	BRONZO BRONZE
L	Diffusori + piattelli / Diffusers + disks	TECNOPLIMERO TECNOPOLYMER	
N	Base d'aspirazione / Suction base	ACCIAIO INOX AISI 304 - DIN 1.4301 / STAINLESS STEEL	
R	Flangia inferiore Lower support	REX	IXEF
		GPV.RX	BRONZO BRONZE
S	Flangia inferiore Lower support	REX	IXEF
		GPV.RX	BRONZO BRONZE
V	Flangia inferiore Lower support	REX	IXEF
		GPV.RX	BRONZO BRONZE

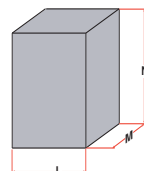
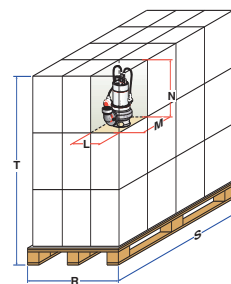
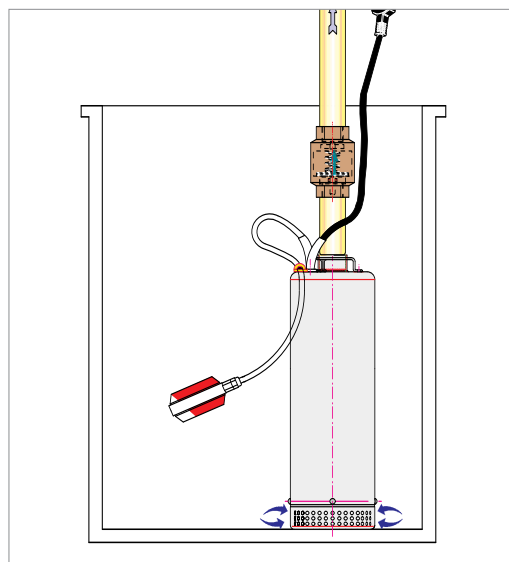
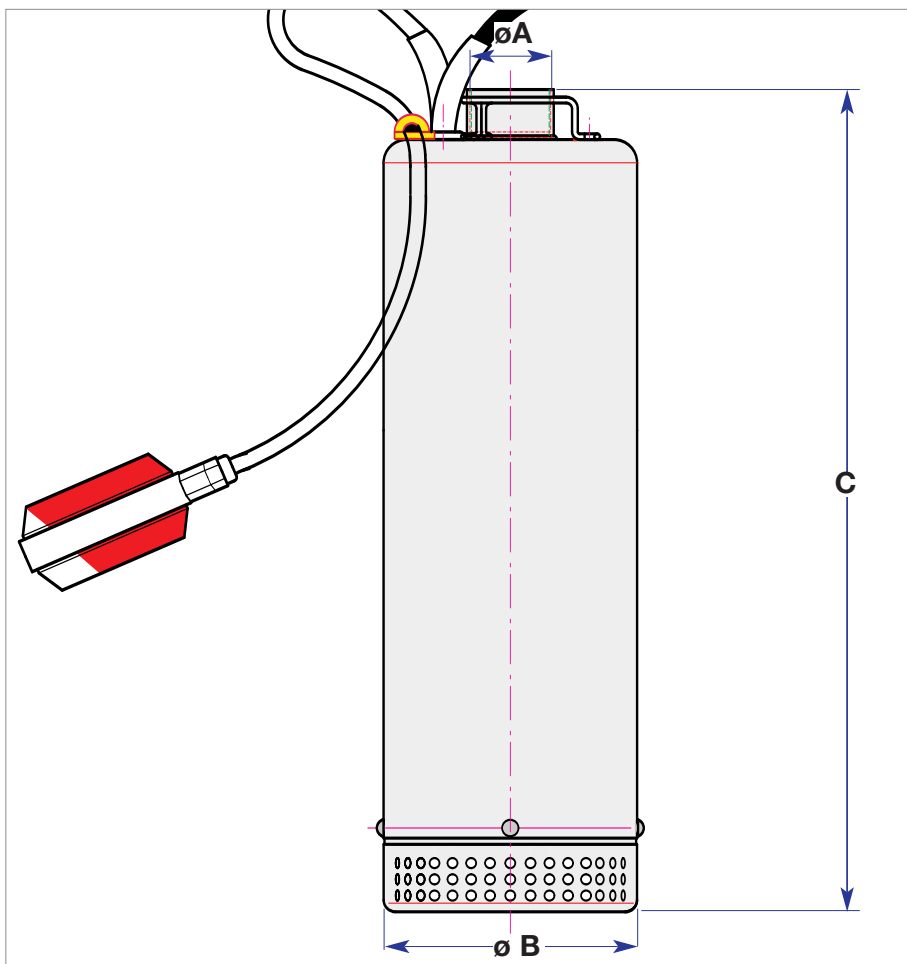




MODELLO MODEL	VOLTAGGIO VOLTAGE 50 Hz	DATI ELETTRICI / ELECTRICAL DATA						DATI IDRAULICI / HYDRAULIC DATA									
		P1max kW	P2 nom. kW	I max HP	I max Ampere	Condensatore µF	Capacitor VC	m³/h	0	0,6	1,2	1,8	2,4	3	3,6	4,5	9,6
GPV.RX 100/44 M	1 x 220-230V	0,9	0,55	0,75	4,0	20,0	450	H (m)	0	10	20	30	40	50	60	75	100
GPV.RX 150/64 M	1 x 220-230V	1,1	0,75	1,0	5,0	20,0	450		44,0	44,5	41,5	38,5	35,0	29,5	25,0	16,0	---
GPV.RX 200/84 M	1 x 220-230V	1,4	0,9	1,2	6,5	30,0	450		53,0	51,5	50,0	46,5	42,0	35,0	30,0	19,0	---
REX 100/44 M	1 x 220-230V	1,6	0,75	1,0	7,4	25,0	450		76,5	74,0	70,0	65,0	60,0	54,0	46,0	32,5	---
REX 100/44 T	3 x 380-440V	1,3	0,75	1,0	2,2	---	---		46,0	45,0	44,0	42,0	40,0	36,0	32,0	28,5	5,0
REX 150/64 M	1 x 220-230V	2,1	1,1	1,5	9,5	30,0	450		46,0	45,0	44,0	42,0	40,0	36,0	32,0	28,5	5,0
REX 150/64 T	3 x 380-440V	1,9	1,1	1,5	3,8	---	---		68,0	67,0	66,0	63,0	60,0	54,0	48,0	43,0	8,0
									68,0	67,0	66,0	63,0	60,0	54,0	48,0	43,0	8,0

PREVALENZA TOTALE in METRI COLONNA ACQUA / TOTAL PUMP HEAD AND WATER COLUMN HEIGHT IN m.

DIMENSIONI e PESI / SIZE AND WEIGHT DATA:



MODELLO / MODEL	DIMENSIONI POMPA in mm. / PUMP DIMENSIONS in mm.		
	A	B	C
GPV.RX 100/44 M	1" 1/4	130	434
GPV.RX 150/64 M	1" 1/4	130	458
GPV.RX 200/84 M	1" 1/4	130	530
REX 100/44	2"	138,5	446
REX 150/64	2"	138,5	536

MODELLO MODEL	DIMENSIONI SCATOLA / PACKING DIMENSIONS				DIMENSIONI PALLET / PALLET DIMENSIONS				
	L	M	N	Peso / Weight Kg	R	S	T	nr.	Peso / Weight Kg
	mm	mm	mm		mm	mm	mm	scatole/cartons	
GPV.RX 100/44	455	210	250	14,6	800	1200	1500	30	465
GPV.RX 150/64	490	210	250	16,5	800	1200	1500	30	520
GPV.RX 200/84	585	210	250	18,8	800	1200	1500	30	590
REX 100/44	600	400	245	14,5	800	1200	1220	25	385
REX 150/64	600	400	245	15,5	800	1200	1220	25	410