



RPM DECELERATOR
(Engine Throttle controller)

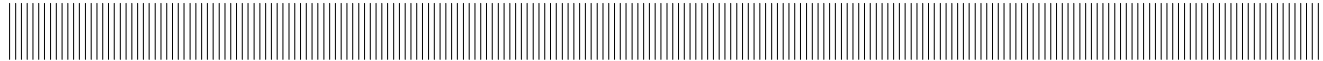
RG1

GB

23/03/10

2

10.9118.00

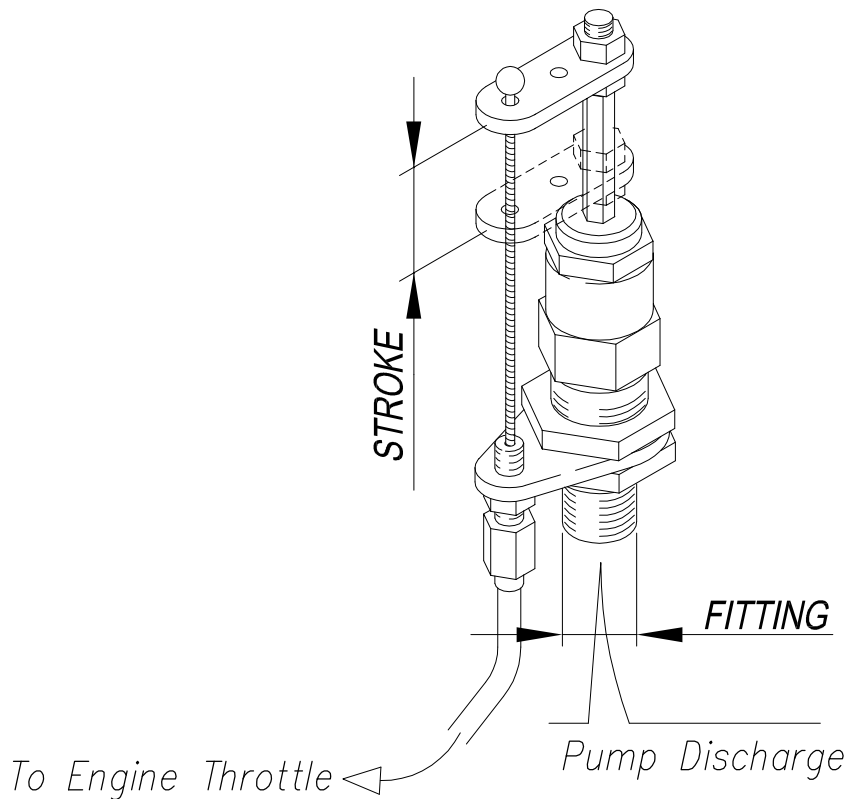


FEATURES

- Reduces engine RPM when pump is in by-pass resultant in reduced engine wear.
- Prolongs pump life by reducing potential fluid heat build-up while pump is in by-pass.
- Reduces fuel consumption because engine is not continually running at full RPM.
- Instant on/off response eliminating pressure delays at gun opening.

SPECIFICATIONS

	29.0120.00	29.0130.00
RATED PRESSURE	250 bar – 25 MPa (3650 PSI)	
PERMISSIBLE PRESSURE	280 bar – 28 MPa (4050 PSI)	
ACTUATION PRESSURE MIN-MAX	15–36bar (220–520PSI) 1.5–3.6MPa	5–20bar (72.5–290PSI) 0.5–2 MPa
MAX. TEMPERATURE	160°C (320° F)	
MAX. WORKING TEMPERATURE	90°C (195° F)	
STROKE	7mm (0.275 in.)	14mm (0.55 in.)
FITTING SIZE	G1/4 M (BSP)	
WEIGHT	0.15 Kg (5.2 oz)	0.18 Kg (6.4 oz)



INSTALLATION: The RPM DECELERATOR valve will function in any position, however, a minimum number of bends should be in the throttle cable to insure smooth consistent operation. Install the RPM DECELERATOR into the discharge manifold port of the pump or with a T fitting between the pump and the unloader valve.

OPERATION: When the gun is closed (trigger released) the unloader valve will go into by-pass and drop the system pressure upstream the valve. This change in pressure moves the piston of the RPM DECELERATOR, reducing the tension on the throttle cable to permit the engine to idle.
NOTE: The RPM DECELERATOR cannot be used with a pressure regulator (not unloader) as this kind of valve always maintains the working pressure in the system and will not give the required pressure drop to activate the piston of the decelerator.

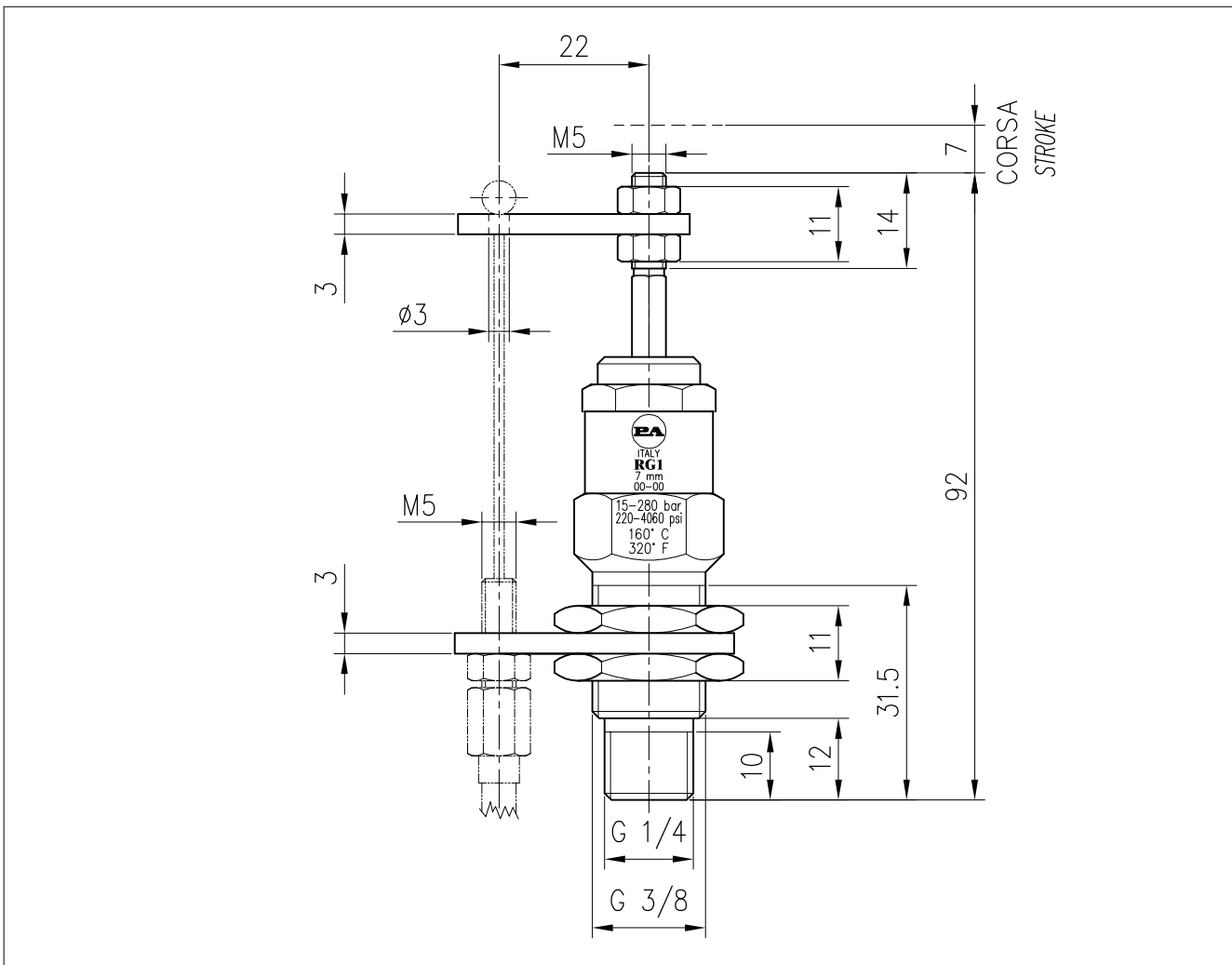
	EQUIPAGGIAMENTI TECNICI LAVAGGIO	29.0120.00 RG1 RALLENTATORE DI GIRI	 
			22/03/10



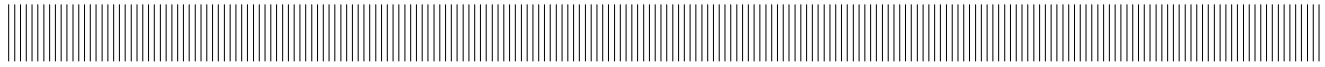
SPECIFICHE TECNICHE
SPECIFICATION

- PRESSIONE NOMINALE RATED PRESSURE	250 bar – 25 MPa (3650 psi)
- PRESSIONE CONSENTITA PERMISSIBLE PRESSURE	280 bar – 28 MPa (4050 psi)
- PRESSIONE DI LAVORO WORKING PRESSURE	(CORSA – STROKE) 0 – (15bar – 1.5MPa) (218psi) (CORSA – STROKE) 7 – (36bar – 3.6MPa) (520psi)
- TEMPERATURA MASSIMA MAX TEMPERATURE	160° C (320 °F)
- TEMPERATURA MASSIMA LAVORO MAX WORKING TEMPERATURE	90° C (195 °F)
- CORSA STROKE	7 mm

MISURE D'INGOMBRO
OVERALL DIMENSIONS



	EQUIPAGGIAMENTI TECNICI LAVAGGIO	29.0130.00 RG1 RALLENTATORE DI GIRI	Ⓢ ⒼⓅ	
			22/03/10	



SPECIFICHE TECNICHE
SPECIFICATION

- PRESSIONE NOMINALE RATED PRESSURE	250 bar – 25 MPa (3650 psi)
- PRESSIONE CONSENTITA PERMISSIBLE PRESSURE	280 bar – 28 MPa (4050 psi)
- PRESSIONE DI LAVORO WORKING PRESSURE	(CORSA–STROKE) 0 – (5bar – 0.5MPa) (72.5psi) (CORSA–STROKE) 14 – (20bar – 2MPa) (290psi)
- TEMPERATURA MASSIMA MAX WORKING TEMPERATURE	160° C (320 °F)
- TEMPERATURA MASSIMA LAVORO MAX WORKING TEMPERATURE	90° C (195 °F)
- CORSA STROKE	14 mm

MISURE D'INGOMBRO
OVERALL DIMENSIONS

