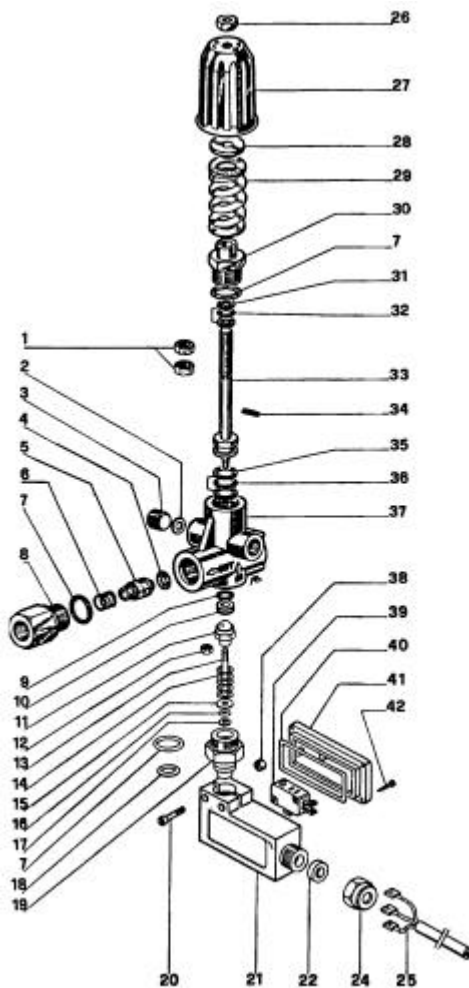


ART619



POS	REF	DESCRIPTION	QTY
1	005.0302.00	M8 NUT	2
2*	005.0602.00	GASKET	1
3	005.1701.01	3/8 G PLUG	1
4*	005.0601.09	O-RING 6312-90 SH	1
5	005.1200.00	SHUTTER	1
6*	005.1000.02	SHUTTER SPRING	1
7	005.0601.08	O-RING 2068	3
8	005.1500.10	CHECK CONNECTOR	1
9*	001.0601.29	O-RING 2043-90 SH	1
10*	001.1602.00	SEAT	1
11*	108.6504.09	FRAME WITH BALL	1
12*	108.0302.08	BRASS M4 NUT	1
13	108.1300.07	M4 NUT	1
14	005.1000.03	SPRING	1
15	108.1501.11	WASHER	1
16	002.0601.03	O-RING AD 36	1
17	001.0001.00	BACK RING	1
18	108.0601.36	O-RING 3043	1
19	108.1500.43	NIPPLE	1
20	108.1901.00	M4 SCREW	2
21	108.1601.28	HOUSING	1

POS	REF	DESCRIPTION	QTY
22	108.0601.44	O-RING	1
24	108.0600.20	RING NUT	1
25	108.0204.01	47" CABLE - 3 WAYS	1
26	005.0301.01	M8 LOCK NUT	1
27	005.4003.00	KNOB	1
28	005.1501.01	WASHER	1
29	005.4004.01	2900 PSI SPRING	1
29	005.4004.02	3650 PSI SPRING	1
30	005.1500.11	STEM GUIDE UNION	1
31*	005.0001.02	BACK RING	2
32*	005.0601.06	O-RING 2031	1
33	005.1605.15	STEM	1
34	005.1603.01	SPRING PIN	1
35*	005.0001.25	BACK RING	2
36*	005.0601.01	O-RING 2050	1
37	005.0200.26	BODY BYPASS 3/8 G-F	1
38	004.0302.05	M4 NUT	2
39	108.0803.00	SWITCH	1
40	108.0601.37	O-RING 2175	1
41	108.0201.04	COVER	1
42	108.1900.04	SCREW	4
*	003.6502.14	REPAIR KIT	