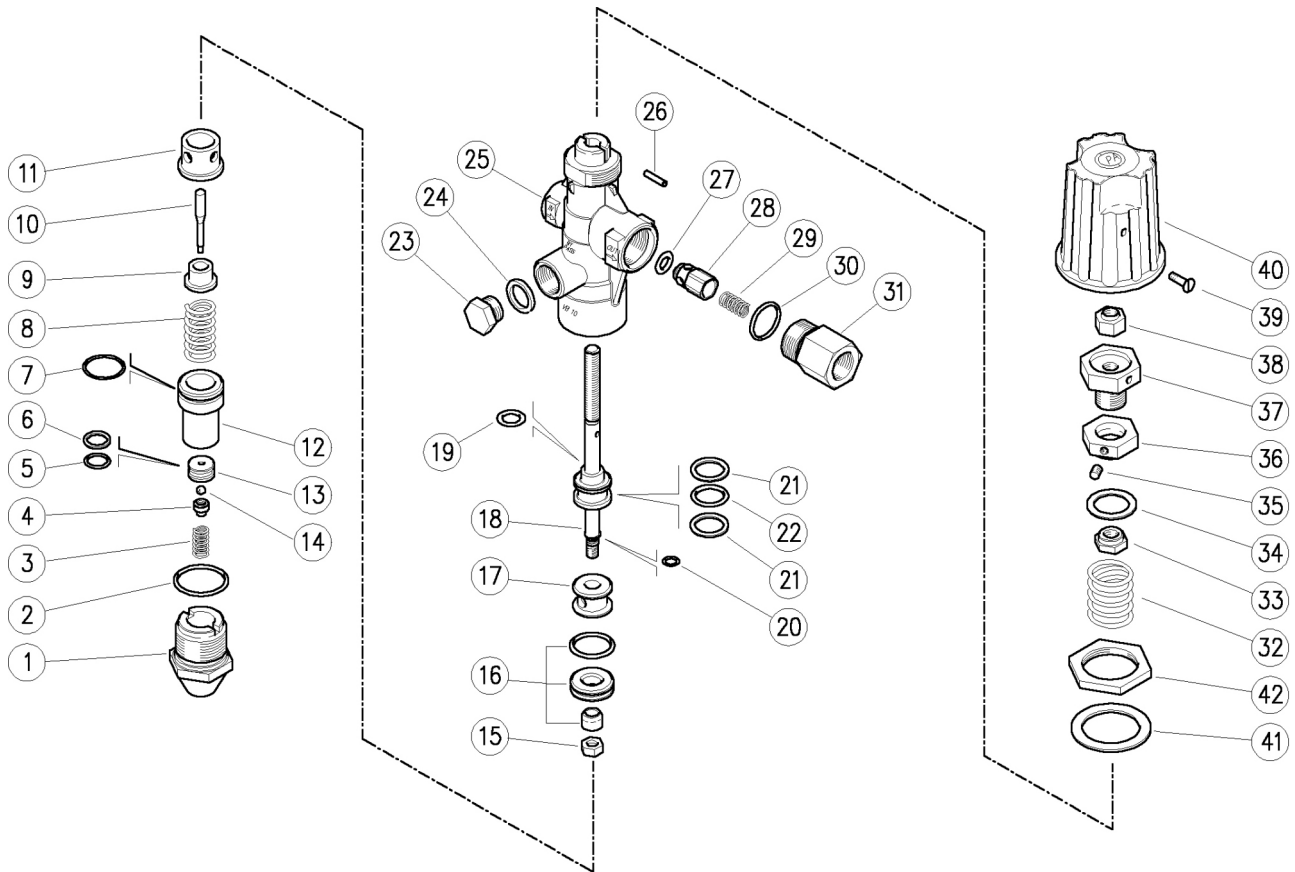


60.1150.00 VB10 unload. 3/8F Bsp +sst.pist.



Pos.	P/N	Description	Q.ty	K1
1	60.1156.31	Lower plug, M27x1,5 brass	1	
2	10.3074.01	O-ring, 1,78x25,12 mm Ni 85	1	•
3	60.8006.51	Spring, 1x7,2x14 mm Sst.	1	
4	60.8014.51	Ball holding piston, Sst.	1	
5	10.3058.02	O-ring, 1,78x10,82 mm Ni 85	1	•
6	10.4090.00	Back-up ring, 11,2x14x1,5 mm	1	•
7	10.3072.01	O-ring, 1,78x20,35 mm Ni 85	1	•
8	60.1102.51	Spring, 2,5x12,6x26 mm Sst.	1	
9	60.1154.31	Spacer ring, 5,2x15x8,5 mm brass	1	
10	60.1157.51	Pin, Sst.	1	
11	60.1155.31	Spacer ring, 11,5x24x19 mm brass	1	
12	60.1153.31	Seat holder, 24 mm brass	1	
13	60.8015.51	Seat, 3x14x7,5 mm Sst.	1	•
14	14.7418.71	Ball, 5/32"	1	•
15	11.4540.00	Hex. nut, M6, Sst.	1	
16	60.1116.24	Seat, 10mm+O-ring, 1,78mm NBR85+shutt.	1	•
17	60.1105.31	Spacer ring, 8,5x20,8x14,5mm brs.	1	
18	60.1151.23	Piston -VB10/2	1	
19	10.3170.08	O-ring, 2,62x7,6 mm Ni 85	1	•
20	10.3001.01	O-ring, 1x4 mm Ni 85	1	•
21	10.4056.00	Back-up ring, oprn. 15,5x19,9x2 mm	2	•

Pos.	P/N	Description	Q.ty	K1
22	10.3180.00	O-ring, 2,62x15,08 mm	1	•
23	60.0028.31	Plug,brass 3/8 Bsp,hex.19	1	
24	14.4042.00	Washer, 16,7x22x1,5 mm alu.	1	
25	60.1108.35	Housing -VB10, 3/8 FFF Bsp brass	1	
26	15.1021.00	Roll pin, 3x14 mm Sst.	1	
27	10.3213.00	O-ring, 3x6 mm	1	•
28	60.0052.31	Shutter pin, brass	1	
29	60.0053.51	Spring, 0,7x9x20 mm Sst.	1	
30	10.3070.02	O-ring, 1,78x18,77 mm Ni 85	1	•
31	60.0058.31	Delivery coupl., 3/8F Bsp brass	1	
32	60.2203.61	Spring, 4,2x27,4x31 mm z.pl.	1	
33	60.2207.31	Ring nut, M8 brass	1	
34	60.2208.84	Washer, 19x26x1,5 mm PA black	1	
35	16.2105.00	Set screw, DIN913 M5x6 mm	1	
36	60.2252.31	Ring nut, M16x1 brass	1	
37	60.2253.31	Regulating pin, brass	1	
38	11.4589.10	Hex. locknut, M8	1	
39	16.1838.00	Screw, DIN7985 M4x10 mm z.pl.	1	
40	60.2251.84	Valve regulating knob, PA black	1	
41	14.3582.00	Washer, 30,5x42x2 mm	1	
42	60.2254.31	Ring nut, M30 brass	1	

Kit	P/N	Description	Q.ty
K1	60.1158.24	Spare kit -VB10/2, 13x1pcs.	1