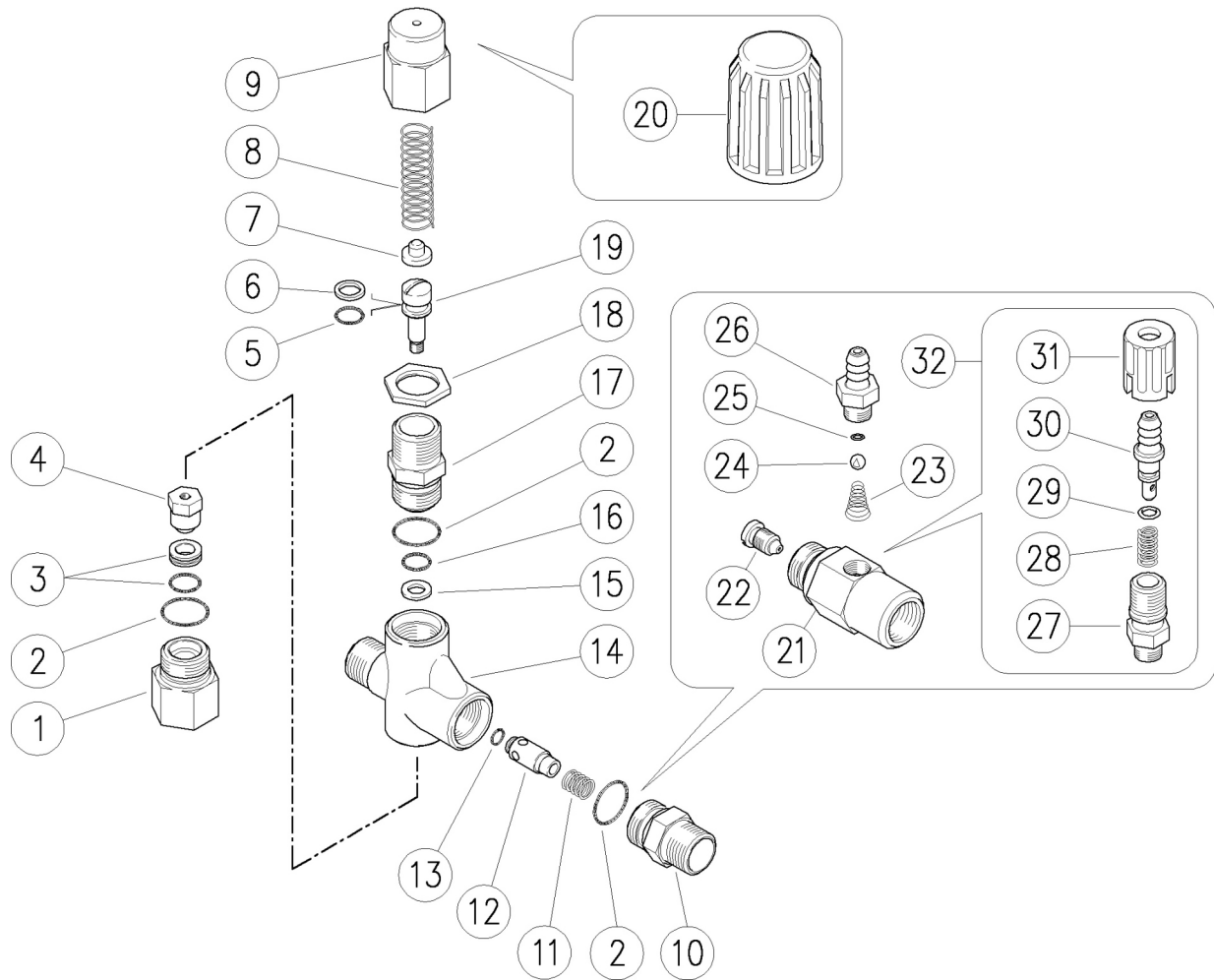


60.0300.00 VB130 unload. 3/8MM Bsp, byp:3/8F  
 60.0300.05 VB 130 unload. 3/8M Npt, byp:3/8F  
 60.0300.50 VB130-8MPa valve 3/8Bsp M z.pl. spring

60.0300.55 VB130-8MPa valve 3/8 Npt M z.pl. spring  
 60.0320.21 VB130 valv. 3/8Bsp MM +2,1mm adjust.inj.  
 60.0321.18 VB 130 unld.3/8M Bsp,by:3/8F+fix.inj,1,8



Pos.	P/N	Description	Q.ty	K1	K2
1	60.0306.31	Bypass coupl., 3/8F Bsp brass	1		
1	60.0327.31	Seat coupl., 3/8F Npt brass (1,2)	1		
2	10.3066.00	O-ring, 1,78x15,6 mm	3	•	•
3	60.0314.20	Seat, 7mm + O-ring, 1mm NBR85	1	•	•
4	60.0333.21	Rest, M5 brass + ball, 11/32" Sst.	1	•	•
5	10.3055.00	O-ring, 1,78x7,66 mm	1	•	•
6	10.4008.00	Back-up ring, opn. 8x11x1,2 mm	1	•	•
7	60.0310.61	Spring guide, z.pl.	1		
7	60.0310.51	Spring seat, Sst. **	1		
8	60.0313.61	Spring, 3x12,3x41 mm	1		
8	60.0323.61	Spring, 2,5x12x41 mm white (3,2)	1		
9	60.0304.31	Valve regulating knob, brass	1		
10	60.0305.31	Delivery coupl., 3/8M Bsp c/sunk, brass	1		
10	60.0326.31	Delivery coupl., 3/8M Npt brass (1,2)	1		
11	60.0312.51	Spring, 0,6x8,4x11 mm Sst.	1		
12	60.0308.31	Shutter pin, brass	1		
12	60.0308.51	Check valve, Sst. **	1		
13	10.3125.00	O-ring, 2,5x4 mm	1	•	•
14	60.0301.35	Valve housing, -3/8M Bsp brass	1		
14	60.0325.35	Housing -VB130, 3/8M Npt brass (1,2)	1		

Pos.	P/N	Description	Q.ty	K1	K2
15	10.4006.00	Back-up ring, 8,6x6x1,2 mm	1	•	•
16	10.3051.01	O-ring, 1,78x6,07 mm	1	•	•
17	60.0303.31	Piston holder, brass	1		
18	60.0317.31	Locknut, M18x1 brass	1		
19	60.0331.51	Piston, M5 Sst.	1	•	•
20	60.0315.84	Knob VB 7 / 130,plast, hexag.22 **	1		
21	21.0211.31	Inject.housing, M18x1-3/8MM Bsp brass (4)	1		
21	21.0231.31	Inject.housing, M18x1M-M22x1,5M brass	1		
22	21.0212.51	Nozzle, M8x1 - 1,8 mm Sst. (5)	1		
22	21.0213.51	Nozzle, M8x1 - 2,1 mm Sst.	1		
23	21.0160.511	Tapered spring, Sst. -inject., 25pcs	1		
24	14.7420.01	Ball, 7/32" Sst. Aisi 316	1		
25	10.3049.00	O-ring, 1,78x5,28 mm Vi 70	1		
26	21.0003.31	Hose barb, 8 - M12x1 mm brass (5)	1		
27	21.0173.31	Coupling, M12x1-1/4M Bsp brass	1		
28	21.0158.51	Spring, 0,8x7x15 mm Sst.	1		
29	10.3043.01	O-ring, 1,78x4,48 mm Vi 70	1		
30	21.0155.31	Hose barb, d.8 mm brass	1		
31	21.0171.84	Inject.knob, 1/4F Bsp black	1		
32	21.0100.00	Regulator+h.barb 8-M12x1mm brs. inject. (4)	1		

\*\* On request

Kit	P/N	Description	Q.ty
K1	60.0398.24	Spares kit -VB130, 10x1pcs.	1
K2	60.0334.24	Spares kit -VB130, 10x5pcs.	1

(1) 60.0300.05 (2) 60.0300.55 (3) 60.0300.50 (4) 60.0320.21 (5) 60.0321.18