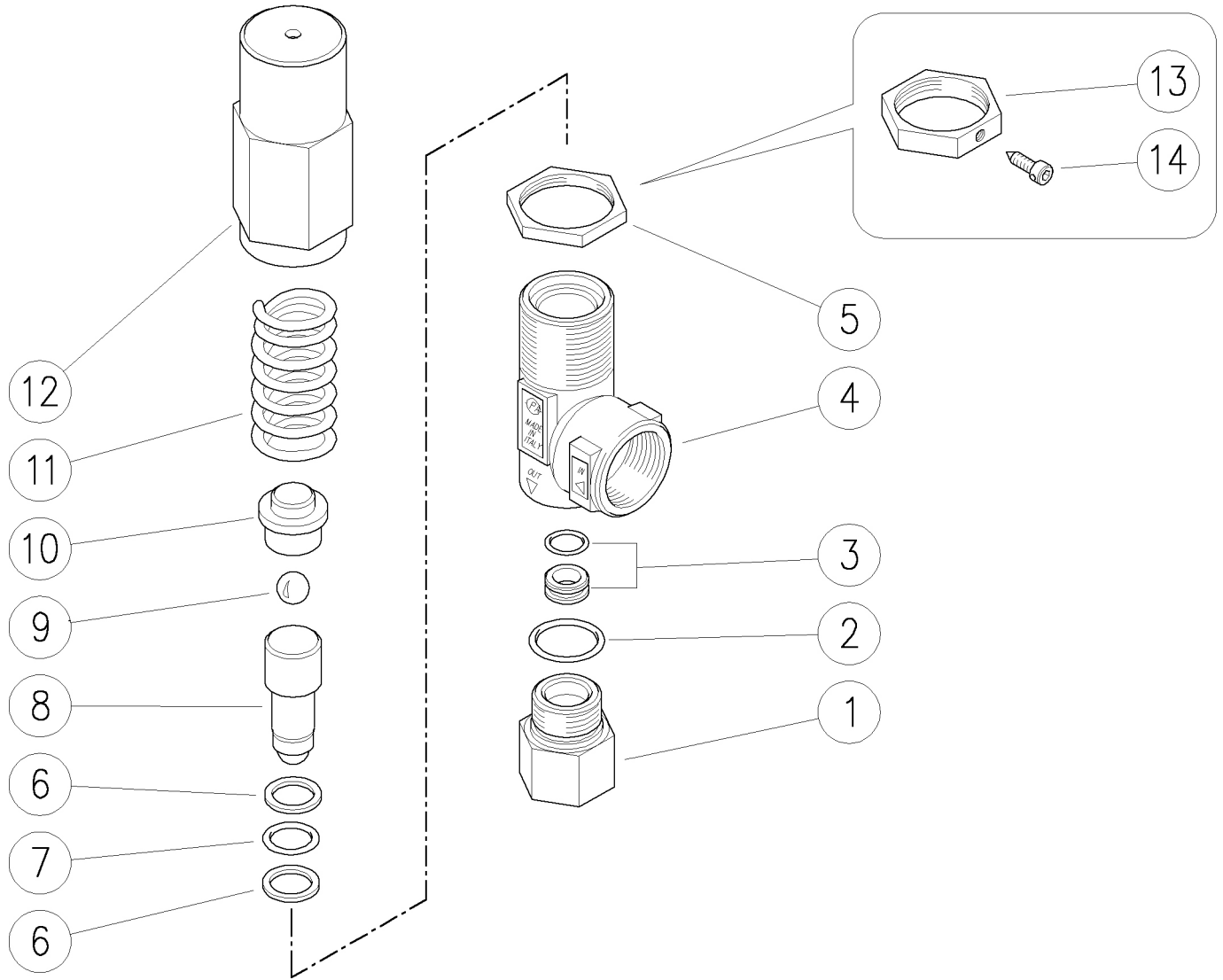


60.5100.00 VS200/180 unload. 3/4F Npt byp:1/2F  
 60.5100.15 VS200/180 unload. 3/4F Bsp byp:1/2F

60.5115.00 VS200/180 Unload. 3/4F-1/2F Bsp to block



Pos.	P/N	Description	Q.ty	K1
1	60.5104.31	Coupling, 1/2F Npt brass (1)	1	
1	60.5111.31	Seat holder, 1/2M Bsp brass (2)	1	
2	10.3070.02	O-ring, 1,78x18,77 mm Ni 85	1	•
3	60.0259.20	Seat, 8mm + O-ring, 1,78mm	1	•
4	60.5101.35	Housing -VS200/180, 3/4F Npt brass (1)	1	
4	60.5109.35	Housing -VS200/180, 3/4F Bsp brass (2)	1	
5	60.5107.31	Ring nut, M30 brass	1	
6	10.4050.00	Back-up ring, 13,5x18x1,5 mm	2	•

Pos.	P/N	Description	Q.ty	K1
7	10.3178.00	O-ring, 2,62x13,1 mm	1	•
8	60.5108.21	Piston, Sst. + ball, 13/32" Sst.	1	•
9	14.7461.00	Ball, 13/32" Sst.	1	
10	60.5105.31	Spring guide spacer, brass	1	
11	60.5102.61	Spring, 6x26,5x67 mm z.pl.	1	
12	60.5106.31	Valve regulating ring nut, brass	1	
13	60.5116.31	Locknut, M30 brass (3)	1	
14	60.1417.51	Special screw, M4 Sst. (3)	1	

Kit	P/N	Description	Q.ty	K1
K1	60.5110.24	Spares kit -VS200/180, 6x1pcs.	1	

(1) 60.5100.00 (2) 60.5100.15 (3) 60.5115.00